



Study Guide



We understand that studying for Envirothon on top of doing school work, finishing up AP tests and finals and whatever else you have on your plate can be overwhelming. With that in mind, we created a study guide to help narrow down the most commonly asked topics for each category. It is in no way comprehensive, but it is meant to be a starting point. We hope this is helpful!

Wildlife

If you have 1 hour to study

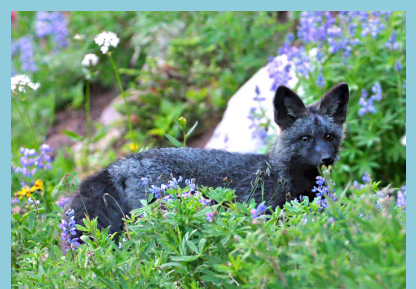
- Wildlife Identification: tracks, hides and skulls
 - Tracks: the most obvious difference between canine and feline tracks is the claw marks. Like house cats, wild felines retract their claws when they walk
 - [Getting Started Identifying Animal Tracks](#)
 - [Differences Between Herbivore, Omnivore and Carnivore Skulls](#)
 - [Skulls Flashcards](#)
 - [Slater Museum Skulls and Teeth](#)
- Washington Wildlife Identification
 - If you see a picture of an animal, you need to be able to know what species it is.
 - [Washington Wildlife Distribution Maps](#)
- [Envirothon Wildlife Interactive Online Course](#)
 - This course covers the following topics: Ecological Levels, Biotic and Abiotic Factors, Cultural Carrying Capacity vs. Habitat Carrying Capacity , Skull Morphology & Identifying Skulls, Food Chains , Trophic Levels & Food Webs



Painted turtle

If you have 2 hours to study

- [Agricultural and Urban Restoration Practices](#)
 - Agricultural Conservation Practices: riparian buffer, hedgerow, windbreak, snag, pond, bee box/ nest, natural area, conservation cover, garden, fallow field
 - [Enhancing Wildlife Habitat on Farmlands](#)
 - Urban Conservation Practices: bat houses, native wildflowers, basking features, hedgerows, roof gardens, stormwater detention, artificial nests, natural areas, backyard ponds, keeping pets indoors
 - [Backyard Wildlife Habitat](#)
- Ecosystems and Habitats of Washington State
 - [Washington Wildlife](#) (This document is comprehensive and we encourage splitting it up and studying one or a few habitats per day)



If you have 3 hours to study

- How Climate Change is Affecting Wildlife
 - [What is Biodiversity?](#)
 - [At Risk Action Plan from WDFW](#)
 - [Pollinators](#)
 - [Amphibians](#)
 - [Fishing](#)
- [Glossary](#)



Feedback



Was this helpful? Were some resources not so helpful? Did you find an awesome resource you want others to know about? Let us know!

Send us an email at
washington.envirothon@gmail.com

